

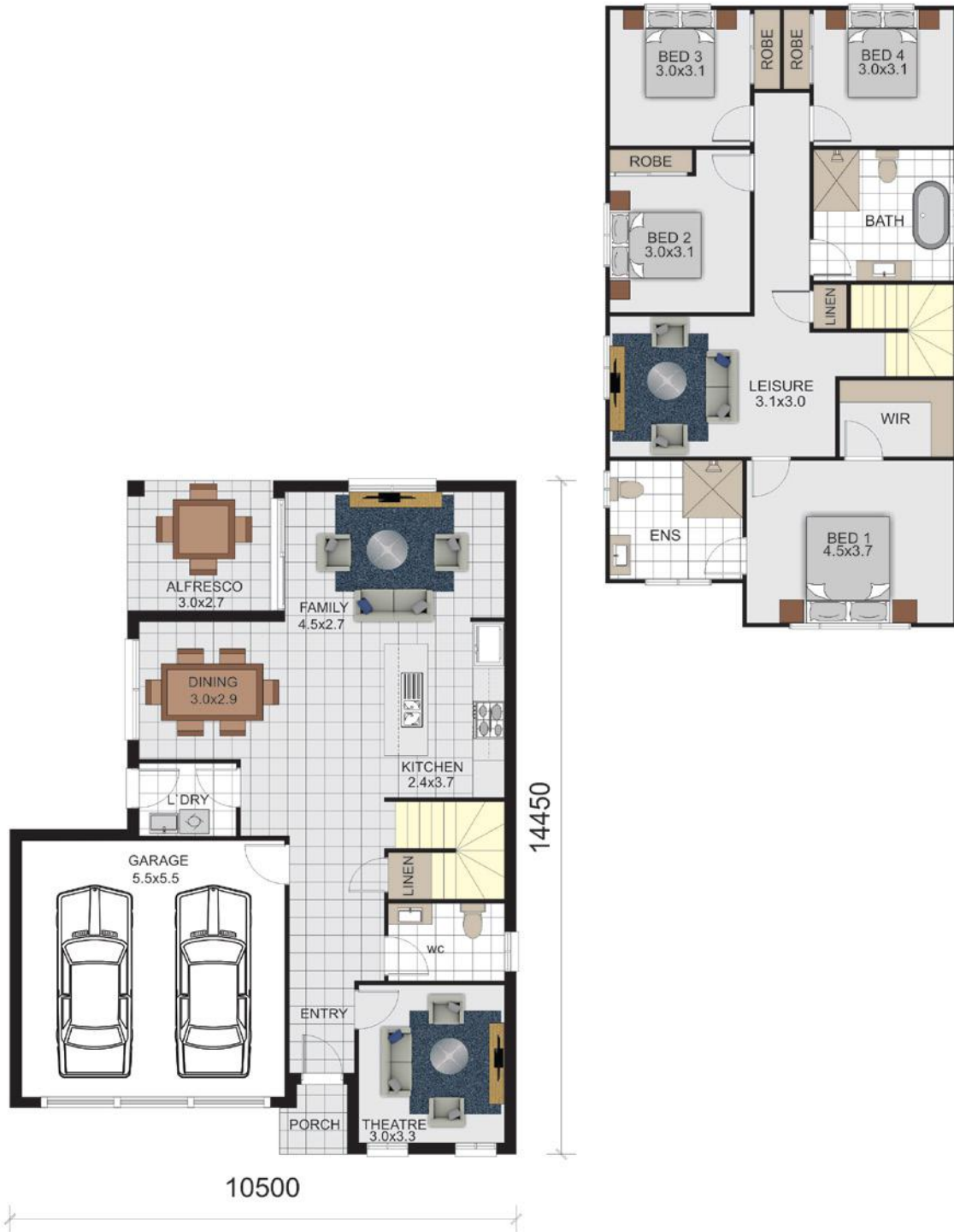


Mosman series

Suits Land: 11.5m frontage and minimum 24m deep

Mosman 25

- 4**
Bedrooms
- 3**
Bathrooms
- 2**
Car Garage



IMPORTANT NOTICE: Images in this brochure, homes on display and floor plans are only a guide and may feature upgrades and optional variations which incur additional cost including but not limited to pendant or down lights, paths, driveways, fencing, floor coverings, rendered external walls, timber windows, feature front entry door and upgrades to roof coverings, garage doors, banisters or kitchen/bathroom layouts or finishes. All measurements are approximate only. For detailed home and facade pricing and specific drawings to suit your property, including details about the King Homes standard inclusions and charges, please speak to one of our Consultants. King Homes NSW reserves the right to change floor plans, specifications and materials without notice. All rights reserved. All plans and façades are protected by copyright and are owned by King Homes NSW Pty Ltd.

