

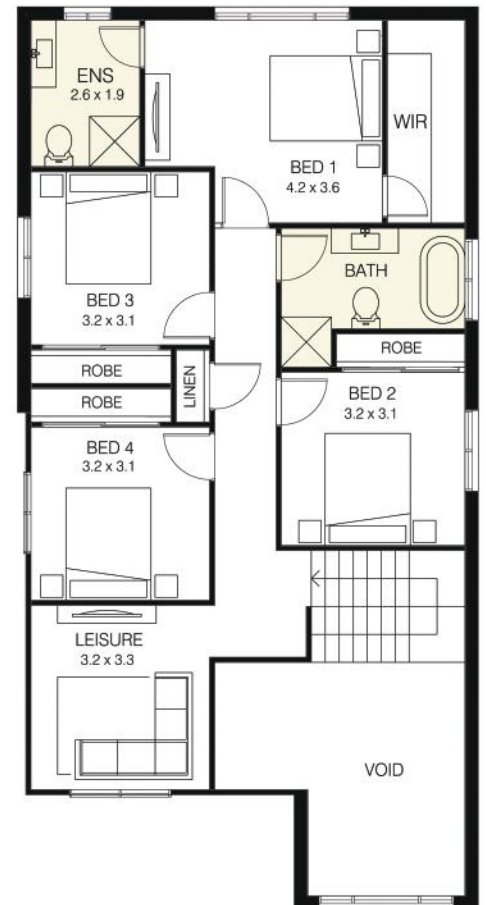
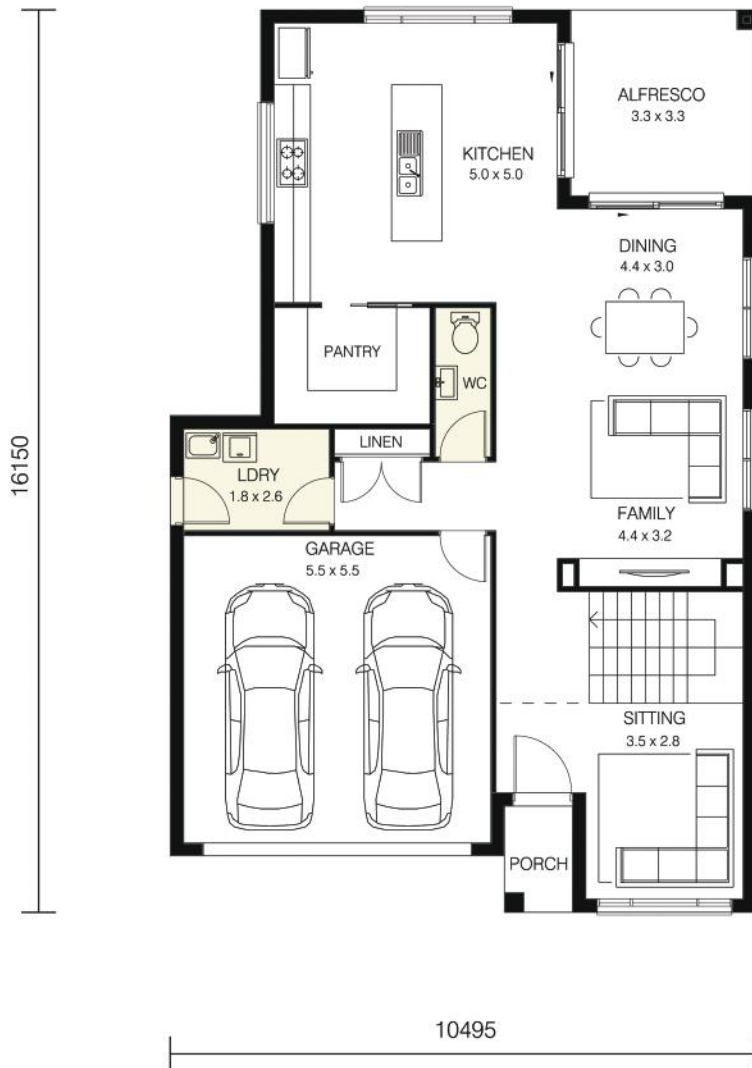


# ALARA 29 MKIII

FIXED PRICE BUILD FROM \$379,900

BEDROOMS    BATHROOMS    CAR GARAGE

4                      2                      2



HOME SIZE:  
29SQ / 268M2

**STANDARD INCLUSIONS ON ALL OUR HOMES:**

- ▶ 2.7M CEILING HEIGHT TO GROUND FLOOR
- ▶ FLOOR COVERINGS TO HOME, PORCH & ALFRESCO
- ▶ POLYURETHANE KITCHEN WITH 20MM STONE BENCHTOPS
- ▶ CONCRETE DRIVEWAY

CONTACT P: 02 8795 0022 E: SALES@KINGHOMESNSW.COM.AU W: WWW.KINGHOMESNSW.COM.AU

IMPORTANT NOTICE: Images in this brochure, homes on display and floor plans are only a guide. All measurements are approximate only. For detailed home and facade pricing and specific drawings to suit your property, including details about the King Homes NSW standard inclusions and charges, please speak to one of our consultants. King Homes NSW reserves the right to change floor plans, specifications and materials without notice. All rights reserved. All plans and facades are protected by copyright and are owned by King Homes NSW.