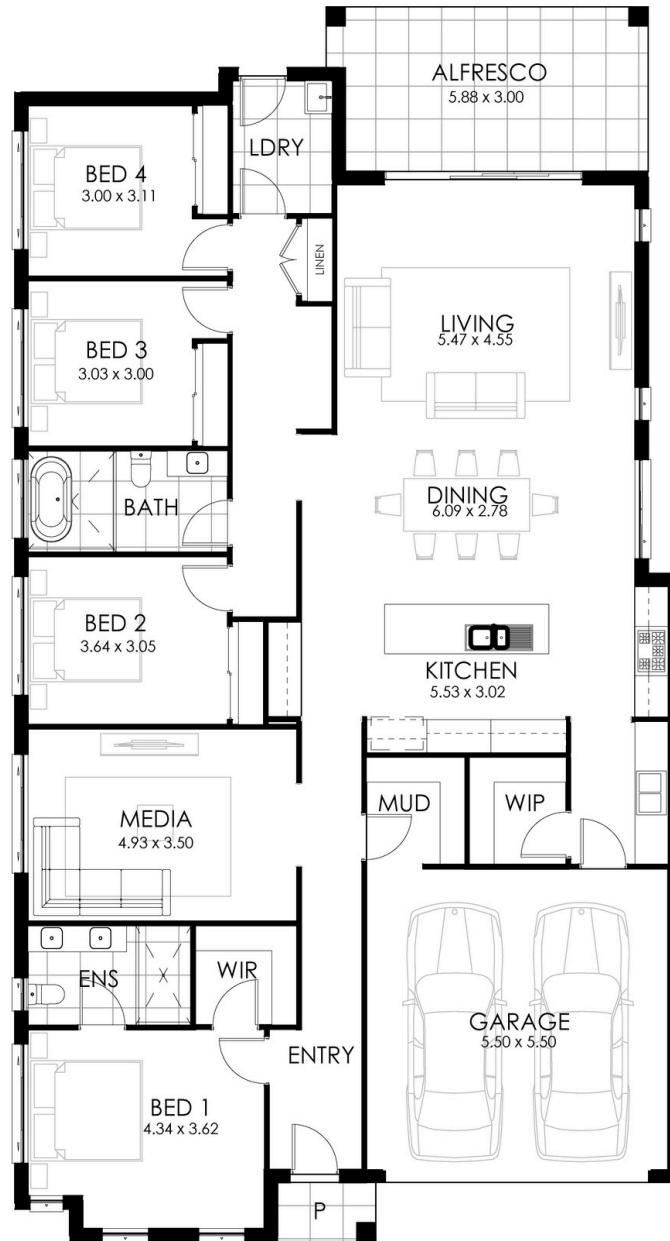


## HOME SPECIFICATIONS

TOTAL SQ	27sq	HOUSE LENGTH	22.50m
TOTAL AREA	252.80m <sup>2</sup>	HOUSE WIDTH	12.16m

*Flexible family home*

**4** BEDROOMS | **2** BATHROOMS | **2** GARAGE



### STANDARD INCLUSIONS

- Designer kitchen with 20mm stone benchtops
- Floor coverings to home including Porch & Alfresco
- 2.7m ceiling height to ground floor
- Driveway

Plus so much more. See our full standard inclusion list

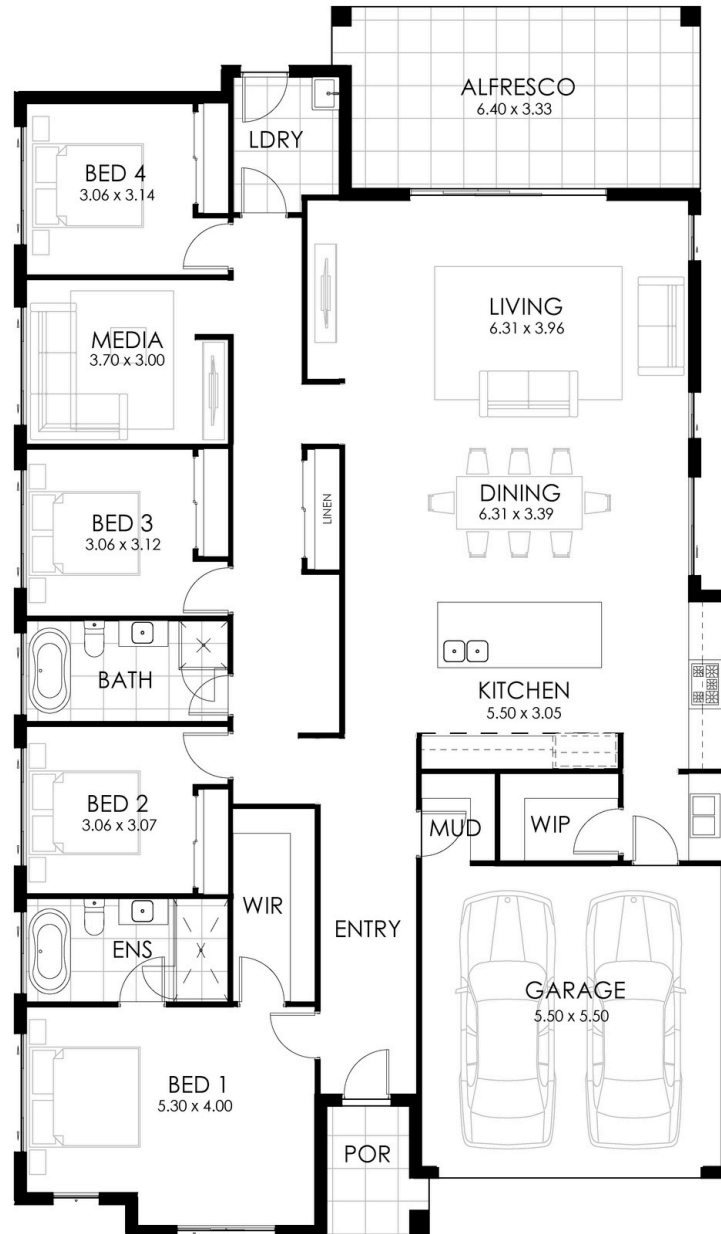
**IMPORTANT NOTICE:** Images in this brochure, homes on display and floor plans are only a guide. All measurements are approximate only and lot widths are based on standard facades. For detailed home and façade pricing and specific drawings to suit your property, including details about the King Homes NSW standard inclusions and charges, please speak to one of our consultants. King Homes NSW reserves the right to change floor plans, specifications and materials without notice. All rights reserved. All plans and facades are protected by copyright and are owned by King Homes NSW.

## HOME SPECIFICATIONS

TOTAL SQ	30sq	HOUSE LENGTH	22.50m
TOTAL AREA	274.30m <sup>2</sup>	HOUSE WIDTH	13.16m

*Flexible family home*

**4** BEDROOMS | **2** BATHROOMS | **2** GARAGE



### STANDARD INCLUSIONS

- Designer kitchen with 20mm stone benchtops
- Floor coverings to home including Porch & Alfresco
- 2.7m ceiling height to ground floor
- Driveway

Plus so much more. See our full standard inclusion list

**IMPORTANT NOTICE:** Images in this brochure, homes on display and floor plans are only a guide. All measurements are approximate only and lot widths are based on standard facades. For detailed home and façade pricing and specific drawings to suit your property, including details about the King Homes NSW standard inclusions and charges, please speak to one of our consultants. King Homes NSW reserves the right to change floor plans, specifications and materials without notice. All rights reserved. All plans and facades are protected by copyright and are owned by King Homes NSW.