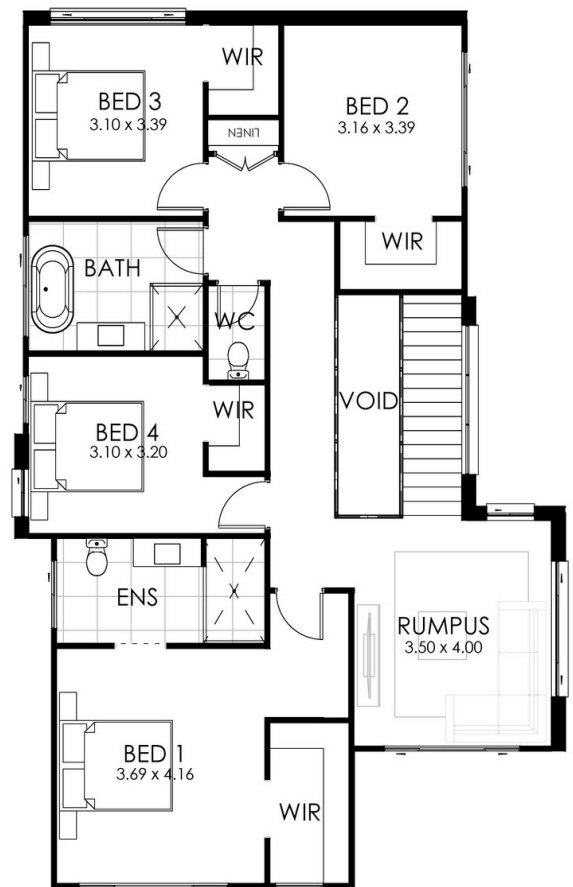
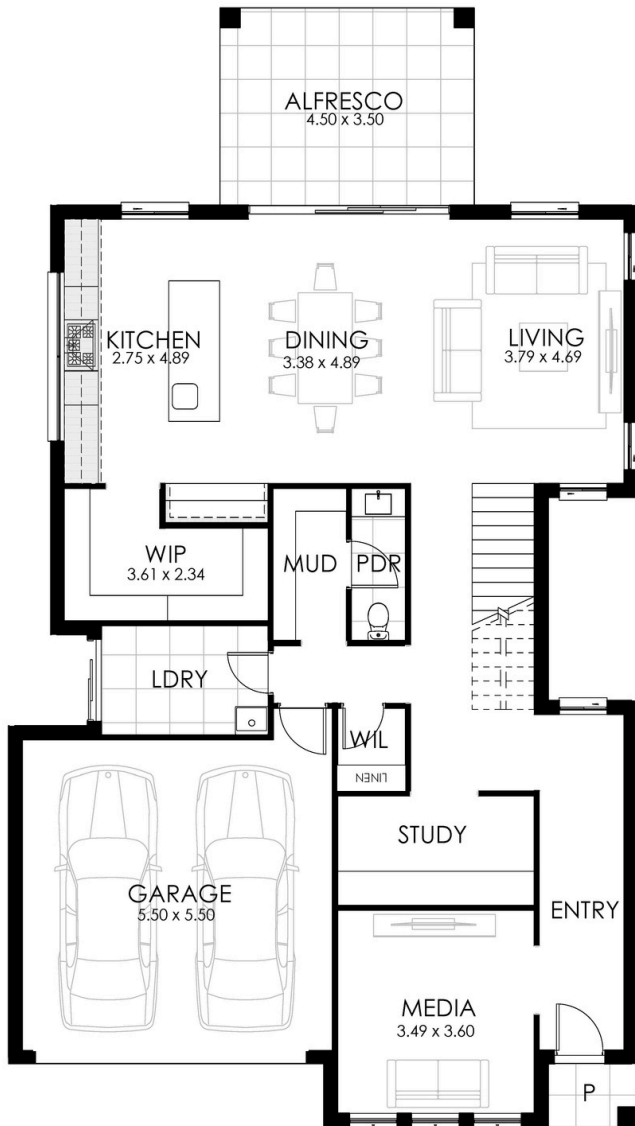


## HOME SPECIFICATIONS

TOTAL SQ	32sq	HOUSE LENGTH	19.72m
TOTAL AREA	300.39m <sup>2</sup>	HOUSE WIDTH	11.15m

Coming soon to HomeWorld Oran Park

**4** BEDROOMS | **2.5** BATHROOMS | **2** GARAGE



### STANDARD INCLUSIONS

- Designer kitchen with 20mm benchtops
- Floor coverings to home including Porch & Alfresco
- 2.7m ceiling height to ground floor
- Driveway

Plus so much more. See our full standard inclusions list

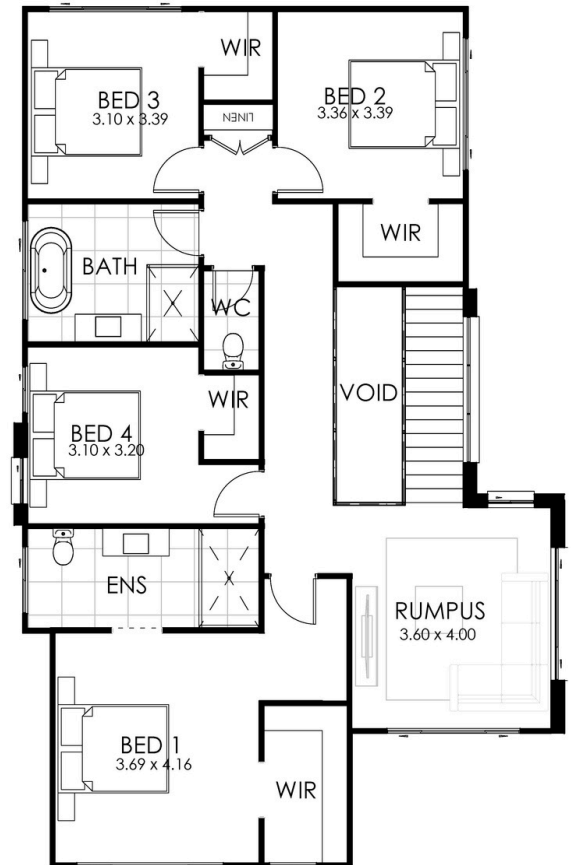
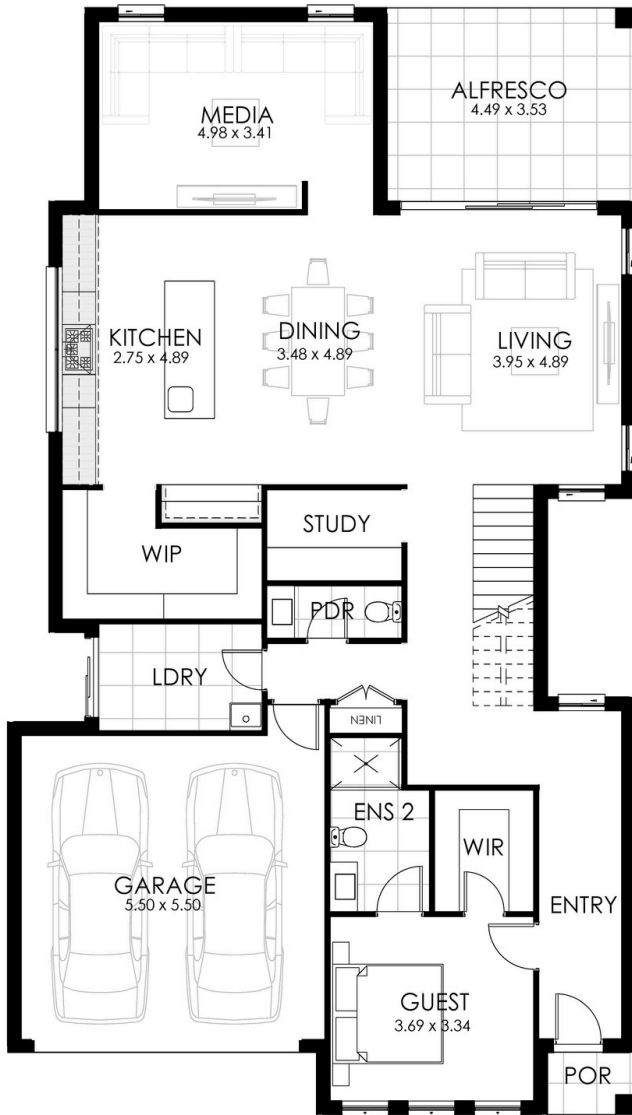
IMPORTANT NOTICE: Images in this brochure, homes on display and floor plans are only a guide. All measurements are approximate only and lot widths are based on standard facades. For detailed home and façade pricing and specific drawings to suit your property, including details about the King Homes NSW standard inclusions and charges, please speak to one of our consultants. King Homes NSW reserves the right to change floor plans, specifications and materials without notice. All rights reserved. All plans and facades are protected by copyright and are owned by King Homes NSW.

## HOME SPECIFICATIONS

TOTAL SQ	36sq	HOUSE LENGTH	20.03m
TOTAL AREA	329.10m <sup>2</sup>	HOUSE WIDTH	11.35m

Coming soon to HomeWorld Oran Park

**5** BEDROOMS | **3.5** BATHROOMS | **2** GARAGE



### STANDARD INCLUSIONS

- Designer kitchen with 20mm benchtops
- Floor coverings to home including Porch & Alfresco
- 2.7m ceiling height to ground floor
- Driveway

Plus so much more. See our full standard inclusions list

IMPORTANT NOTICE: Images in this brochure, homes on display and floor plans are only a guide. All measurements are approximate only and lot widths are based on standard facades. For detailed home and façade pricing and specific drawings to suit your property, including details about the King Homes NSW standard inclusions and charges, please speak to one of our consultants. King Homes NSW reserves the right to change floor plans, specifications and materials without notice. All rights reserved. All plans and facades are protected by copyright and are owned by King Homes NSW.